

# SUITE FOR TUBA

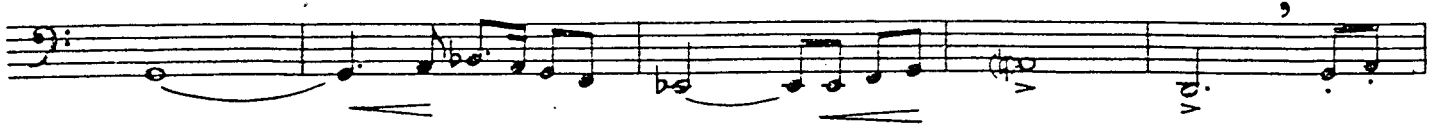
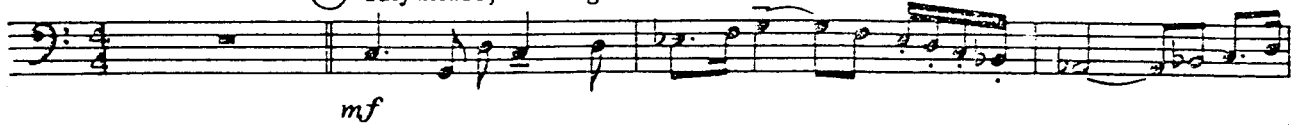
Tuba

## 1. ALLEGRO MAESTOSO

DON HADDAD

Allegro maestoso (♩ = c.132-138)

(A) Rhythmic, but legato



(B)



(C)



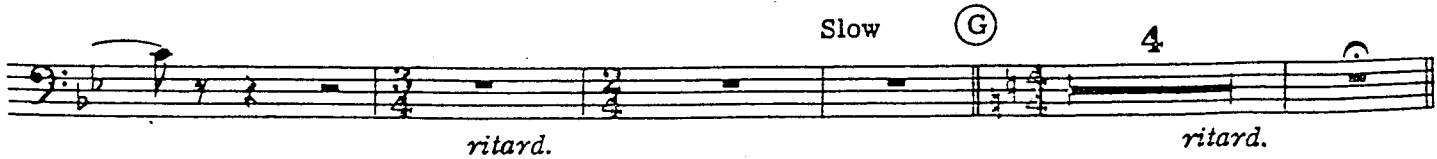
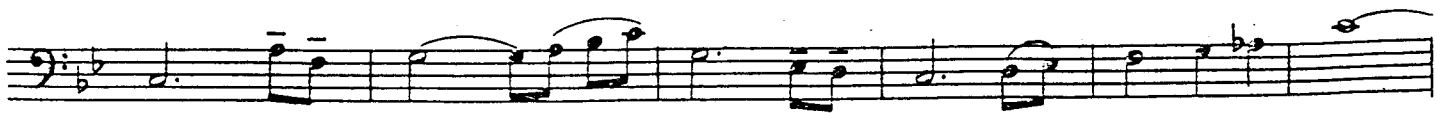
(D)



(E) Adagio (♩ = c.66-72)



(F)



Copyright © 1966 Templeton Publishing  
A Division of Shawnee Press, Inc.

International Copyright Secured All Rights Reserved

SOLE SELLING AGENT: SHAWNEE PRESS, INC., DELAWARE WATER GAP, PA 18327

**COPYING IS ILLEGAL**

Tuba

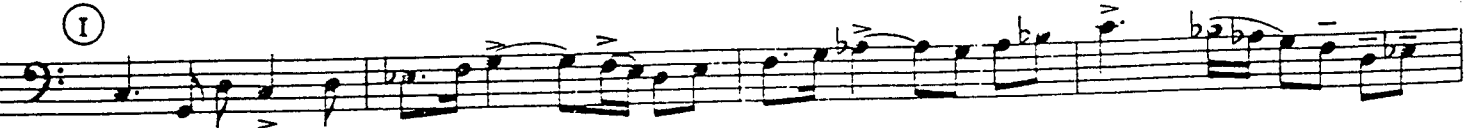
(H) Allegro (♩ = c.144)

2

*marcato*



(I)



*espress.*



(J) Più mosso



*ritard. sub. p*



Broad



*molto ritard.*

2. ANDANTE ESPRESSIVO

Andante (A)  $\frac{3}{8}$   
espressivo (♩ = c.72)



*mp dolce*



(B)



(C)



*p cresc.*

3. ALLEGRO CON BRIO

Allegro con brio  
(♩ = c.144-152)  
4

Tuba

Cadenza ad lib.

espress.

f accel.

(E) Broaden (F) a tempo 4  
p f

p

(H) f

(I) subito p cresc.

f ritard.

Broad a tempo Più mosso  
full p cresc.

f ff